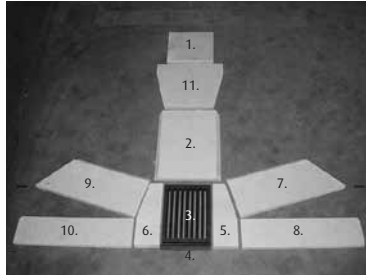


VERMICULITE FIRE BRICK INSTALLATION SEQUENCE – WESTFIRE UNIQ 15

Installation procedure:

- 1 – Inner Top Baffle Brick
- 2 – Rear Brick
- 3 – Base Grate
- 4 – Metal Spacer
- 5 – Right Base Brick
- 6 – Left Base Brick
- 7 – Right Angled Side Brick
- 8 – Right Side Brick
- 9 – Left Angled Side Brick
- 10 – Left Side Brick
- 11 – Outer Top Baffle Brick



Inner top baffle brick 1 – positioned on secondary air pipe 8 between two retaining lugs on rear panel.



Right angled side brick 7 fitted.

Inner top baffle brick 1 – positioned on secondary air pipe 8 between two retaining lugs on rear panel.



Right side brick 8 fitted.

Rear brick 2 fitted in line with tertiary air holes.



Left angled side brick 9 fitted.

Base grate 3 fitted between base bricks. Metal spacer 4 positioned in front of grate 3.



Left side brick 10 fitted.

Right base brick 5 fitted.



Outer top baffle brick 11 (smallest straight edge resting on top edge of rear brick) fitted and supported with two side pins.

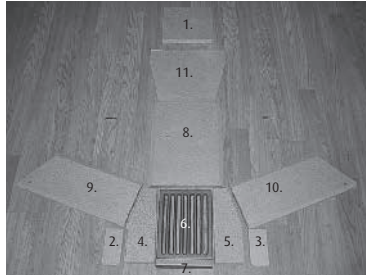
Left base brick 6 fitted.



VERMICULITE FIRE BRICK INSTALLATION SEQUENCE – WESTFIRE UNIQ 16

Installation procedure:

- 1 – Top Turbulence Brick
- 2 – Left Side Small Brick
- 3 – Right Side Small Brick
- 4 – Left Base Brick
- 5 – Right Base Brick
- 6 – Grate
- 7 – Metal Spacer
- 8 – Rear Brick
- 9 – Left Angled Side Brick
- 10 – Right Angled Side Brick
- 11 – Top Baffle Brick

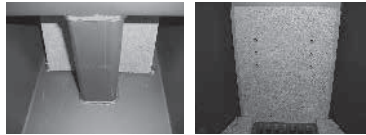


Inner top baffle brick 1 – positioned on secondary air pipe & between two retaining lugs on rear panel.



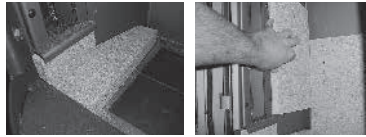
Base bricks, grate, spacer and small side bricks.

Inner top baffle brick 1 – positioned on secondary air pipe & between two retaining lugs on rear panel.



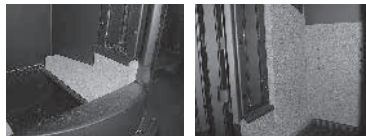
Rear brick 8 fitted in line with tertiary air holes.

Left side small brick 2 fitted under side window supported by left base brick 4. Metal base brick tensioner should be positioned beside base brick 4 and under side brick 2.



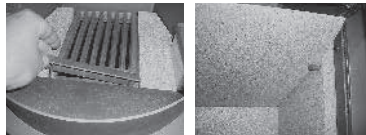
Left & right angled side bricks 9 & 10 lowered into position from above.

Right side small brick 3 fitted under side window supported by right base brick 5.



Angled side brick 9 fitted.

Grate 6 fitted between base bricks. Metal spacer 7 positioned in front of grate 6.



Top baffle brick 11 (smallest straight edge resting on top edge of rear brick) fitted and supported with two side pins.